

G5 Assembly Instruction

W60*D48*H72~115cm ±1

CAUTION

- Be careful when un-packing and assembling.
- Please ensure all parts are intact before assembly.
- Ensure no children or disabled persons are nearby during assembly.
- To be assembled by adult, caution required on adjustment of height and tilt angle.
- Ensure no objects are in the way during table adjustment.

1 Desktop



3 Mounting plate



2 Base plate



4 Gas Spring



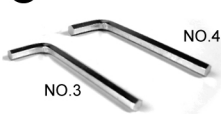
5 Screws+Washers



6 Screws

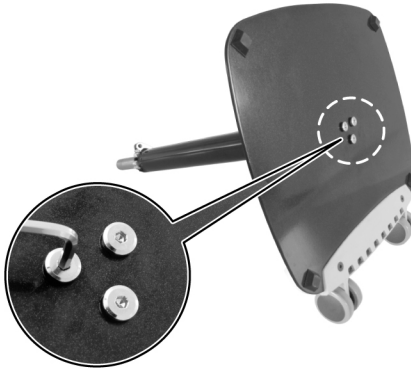


7 Allen keys



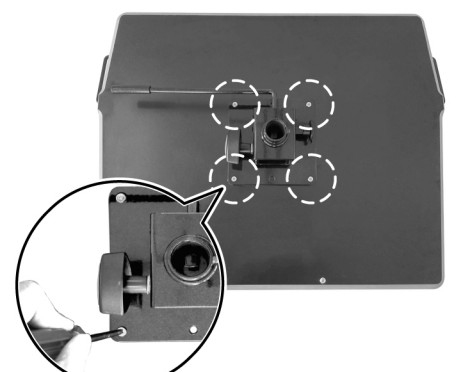
1 →

Fasten the base plate 2 into the bottom of gas spring 4 with 3 screws and 3 washers 5 by Allen Key 7.

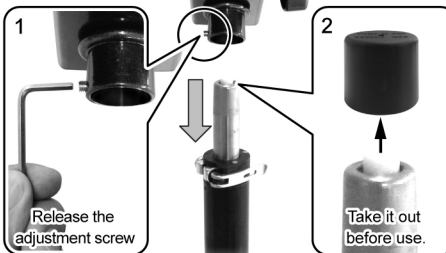


2 →

Place the desk surface 1 face down onto the floor, then fasten on the mounting plate 3 with 4 screws 6.



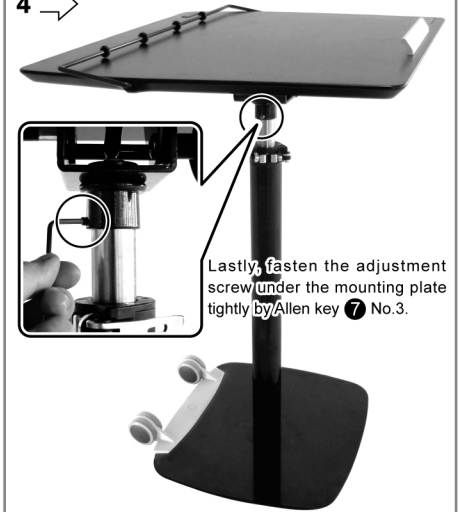
3 →



Release adjustment screw (pic 1) with No. 3 Allen key, and remove black cap (pic. 2) before use. Then, combine step 1 & 2.

Push down the desktop 1 by force for a close fit of desktop 1 with gas spring 4.

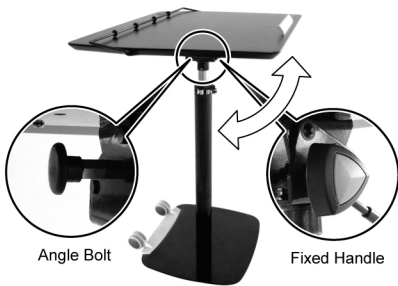
4 →



Operation Instruction

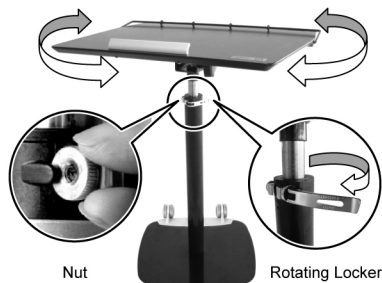
Change the angle

Release the Fixed Handle and use the Angle Bolt to adjust angle, Fasten both handle tightly when finish.

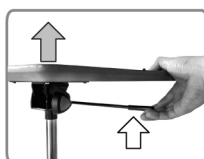
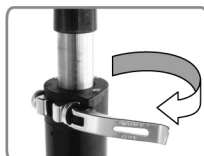


Rotate the desktop

Fixed the desktop by Rotating Locker. or use the nut for adjustment when Rotating Locker is too loose.



Up



Down

